

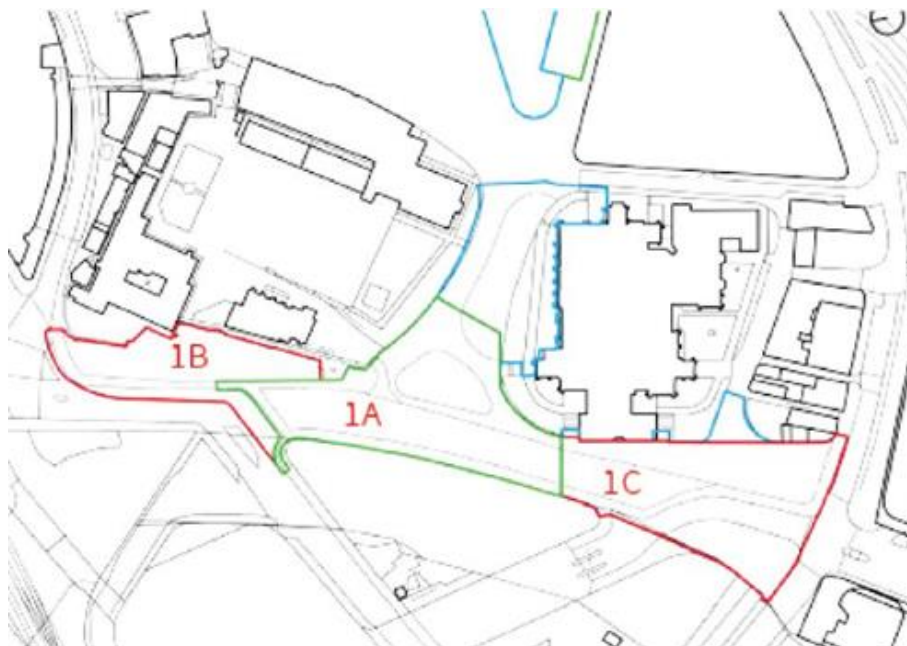
## Appendix 2

### Medieval Quarter (Memorial Gardens)

Planning permission was granted at the Planning and Highways Committee in January 2021 and work commenced on 8 March 2021.



The proposals will be delivered in 3 phases.



## Phase 1a

This phase stretches between Chetham's to the north and the Cathedral to the south, alongside the River Irwell and would contain the Glade of Light Memorial to the 2017 Arena bombing. The works would include the 'halo' a white marble stone ring as a central focus surrounded by planting. The 'halo' would include inscriptions

of the names of the 22 people who lost their lives in the attack as well as inset memory capsules and would be set within a grove of trees.



There are to be raised interpretative plaques at each entrance. These would have information about the memorial, including a tactile map and pictorial representations of key themes. Planting would include ground cover within the sunny glade of grasses, heaths, bulbs and perennials would provide year-round colour. The Glade of Light would provide a space of peace and remembrance.



## Phase 1b

This is to the northernmost extent of the site and includes the footway to Victoria Street and the land vacated by the demolition of the Palatine Building.

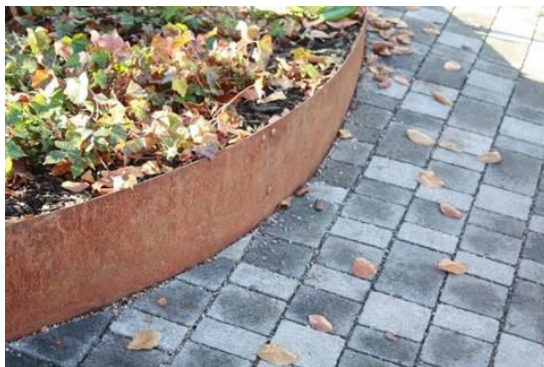
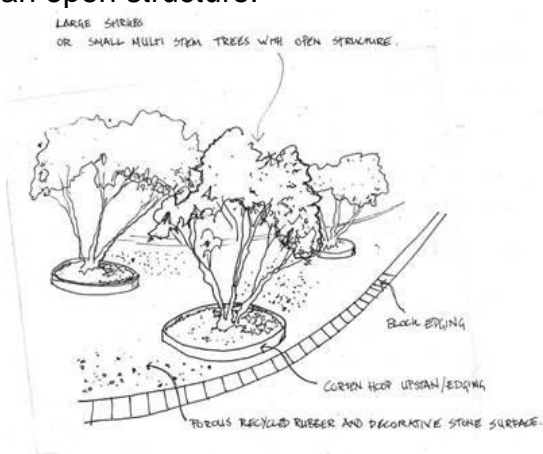
## Phase 1C

This includes the area immediately in front of the Cathedral, up to the parapet of the Irwell and the eastern most extent of Cathedral Approach. The vision is to create a sequence of spaces connected by a riverside walk that would create a vista with the end of Deansgate. Cathedral Square would provide a greatly improved setting for this Grade I listed building.

## New Islington 2020

- 075171/FO/2005/N2 Land Adjacent To The Ashton Canal Pollard Street/Carruthers Street And Bond Street Beswick And Clayton
- 078181/FO/2006/N1 Royal Mill Redhill Street Ancoats Manchester M4 5AU
- 100991/OO/2012/N2 Milliners Wharf Phase 2 Munday Street Off Pollard Street Manchester M4 7BD

Environmental improvements are being delivered using s106 money on a triangle piece of land close to the tram lines opposite St. Anne's RC Primary School. This includes a new porous surface containing large shrubs and small multi stem trees within an open structure.





A pollution protecting hedge (95Lm) is also being provided along the fence line of St Anne's RC Primary School along Pollard Street and an ivy green screen (87Lm) to the canal facing fence line of New Islington Free School



In addition, to improve a public safety issue money is being used to provide a double yellow line and TRO to support waste collections and servicing arrangements on Old Mill St.



### **Southern Cemetery**

- 115035/JO/2017 Spire Hospital Barlow Moor Road Manchester M20 2AF

Contributions have been used to enable the planting of 28 trees (various species from around the world including Turkey, Himalayas, USA, China and the UK) within the cemetery, and this includes supporting 3 years maintenance. This was to mitigate the loss of trees on the nearby development site.



### **Active Lifestyle Centre, Denmark Road**

- 081558/FO/2006/N2 Wilmslow Park Phase 3 Rusholme Place Rusholme Manchester
- 096176/FO/2011/S1 Former Ducie Court Denmark Road Moss Side Manchester

Contributions from several agreements have been used to renovate 3x small sided soccer pitches with new carpet, wall and fence lines at the centre whilst also updating the floodlights; this has allowed the centre which had been closed to reopen to the community.





A local junior football team to have benefitted from the new pitches are Fletcher Moss Rangers who are able to hold their soccer school on Saturday mornings, supporting both the physical and mental wellbeing of children from all over South Manchester.



#### **Whitworth Park (currently ongoing)**

- 081558/FO/2006/N2 Wilmslow Park Phase 3 Rusholme Place Rusholme Manchester
- 096176/FO/2011/S1 Former Ducie Court Denmark Road Moss Side Manchester

The work here included installing a new water and electric supply to an existing volunteer's cabin to help sustain the community growing programme in partnership with the Whitworth Gallery; the project will also deliver improvements to paths due to localised flooding.

The contribution will also support the installation of new play equipment; this will be subject to consultation and agreement with the Friends group.

### **Painswick Park**

- 099153/FO/2012/S2 Site Of Former Talisman Public House Corner Of Portway And Oatlands Road Wythenshawe Manchester M22 1BE

Working with the Parks and Leisure team, spend is taking place on a new lake water pump to improve the water quality for the new stock of fish, new play equipment in the existing play area and a new path and gated access to the Wythenshawe Lifestyles Centre from the Park to connect the two sites for operational purposes.

### **Riverside Park**

- 075007/FO/2005/S2 Former Ferrol House 6 Beechpark Avenue Northenden
- 102660/FO/2013/S2 Camperlands Ltd Mill Lane Northenden Manchester M22 4HR

The installation of a completely new play area to update/replace several items of play equipment in Riverside Park Play Area. Riverside Park and play area developed with the full support of local members and the new friends of Riverside Park and is the only play provision within the ward of Northenden.







## Highway related works

Off site highway work is another area that is commonly subject to a s106 agreement. Over recent years a number of agreements have been entered into to support Residents Parking Zones across the city. These include schemes around North Manchester General Hospital, Hathersage Road, St Georges and the Britannia Basin, Rusholme and Moss Side and The Christie Extension.

In addition £11,225 contribution has been made to a scheme in Didsbury West and Funds have been provided towards the planting of trees on Great Ancoats Street (£230,613)





